



Customer information packet

EM3615T-57

5HP, 1450RPM, 3PH, 50HZ, 184T, 3646M, TEFC, F1

Class - None

Division - Not Applicable

Specifications

Enclosure	TEFC
Frame	184T
Frame Material	Steel
Frequency	50.00 Hz
Motor Letter Type	Three Phase
Output @ Frequency	5.000 HP @ 50 HZ
Phase	3
Synchronous Speed @ Frequency	1500 RPM @ 50 HZ
Voltage @ Frequency	230.0 V @ 50 HZ 400.0 V @ 50 HZ
XP Class and Group	None
XP Division	Not Applicable
Agency Approvals	C UR US CE CURUS IE3 UKCA WEEE
Ambient Temperature	40 °C
Auxillary Box	No Auxillary Box
Auxillary Box Lead Termination	None
Base Indicator	Rigid
Bearing Grease Type	Polyrex EM (-20F +300F)
Blower	None
Current @ Voltage	13.800 A @ 230.0 V 8.000 A @ 400.0 V
Design Code	B
Drip Cover	No Drip Cover
Duty Rating	CONT
Efficiency @ 100% Load	88.4 %
Electrically Isolated Bearing	Not Electrically Isolated
Feedback Device	NO FEEDBACK

Part detail

Revision	J
Type	AC
Mech. spec.	36A001
Base	
Status	PRD/A
Elec. spec.	36WGR998
Layout	36LYA001
Eff. date	05-08-2024
CD Diagram	CD0022
Poles	04
Leads	6#14
Proprietary	False
Created date	12-22-2015

Front Face Code	Standard
Front Shaft Indicator	None
Heater Indicator	No Heater
High Voltage Full Load Amps	8.0 a
Insulation Class	F
Inverter Code	Not Inverter
KVA Code	K
Lifting Lugs	No Lifting Lugs
Locked Bearing Indicator	No Locked Bearing
Motor Lead Exit	Ko Box
Motor Lead Quantity/Wire Size	6 @ 14 AWG
Motor Lead Termination	Flying Leads
Motor Standards	NEMA
Motor Type	3646M
Mounting Arrangement	F1
Number of Poles	4
Overall Length	18.04 IN
Power Factor	75
Product Family	General Purpose
Pulley End Bearing Type	Ball
Pulley Face Code	Standard
Pulley Shaft Indicator	Standard
Rodent Screen	None
RoHS Status	ROHS COMPLIANT
Service Factor	1.15
Shaft Diameter	1.125 IN
Shaft Extension Location	Pulley End
Shaft Ground Indicator	No Shaft Grounding
Shaft Rotation	Reversible
Shaft Slinger Indicator	No Slinger
Speed	1450 rpm
Speed Code	Single Speed
Starting Method	Direct on line
Thermal Device - Bearing	None

Thermal Device - Winding	None
Vibration Sensor Indicator	No Vibration Sensor
Winding Thermal 1	None
Winding Thermal 2	None

Nameplate

NP2716L									
CAT NO	EM3615T-57								
SPEC.	36A001R998G1								
HP	5/3.7KW				PH	3			
VOLTS	230/400								
AMP	13.8/8								
R.P.M. (1/MIN)	1450								
FRAME	184T		HZ	50		I.P.	44		
SER.F.	1.15	CODE	K	DES	B	CL	F		
NOM.EFF.	88.4		% (100%)						
PF	75								
RATING	40C AMB-S1 CONT				CC				
DE BRG	6206		ODE	6205					
ENCL	TEFC	SN							
BLANK	IE3-89.0(75%)88.0(50%)								
	IC411 46KG								

AC Induction Motor Performance Data

Record # 73920

Typical performance - not guaranteed values

Winding: 36WGR998-R002		Type: 3646M	Enclosure: OPEN	
Nameplate Data			400 V, 50 Hz: High Voltage Connection	
Rated Output (HP)	5	Full Load Torque	18.05 LB-FT	
Volts	230/400	Start Configuration	direct on line	
Full Load Amps	13.8/8	Breakdown Torque	76.3 LB-FT	
R.P.M.	1450	Pull-up Torque	40.8 LB-FT	
Hz	50 Phase	Locked-rotor Torque	49.6 LB-FT	
NEMA Design Code	B KVA Code	Starting Current	61.5 A	
Service Factor (S.F.)	1.15	No-load Current	4.2 A	
NEMA Nom. Eff.	88.4 Power Factor	Line-line Res. @ 25°C	1.91 Ω	
Rating - Duty	40C AMB-CONT	Temp. Rise @ Rated Load	82°C	
S.F. Amps		Temp. Rise @ S.F. Load	100°C	
		Locked-rotor Power Factor	44.8	
		Rotor inertia	0.428 LB-FT ²	

Load Characteristics 400 V, 50 Hz, 5 HP

% of Rated Load	25	50	75	100	125	150	S.F.
Power Factor	35	57	71	78	82	84	80
Efficiency	82.6	88.3	89.2	88.6	87.4	85.7	87.9
Speed	1490	1478	1467	1453	1440	1423	1445
Line amperes	4.53	5.3	6.4	7.8	9.4	11.2	8.76

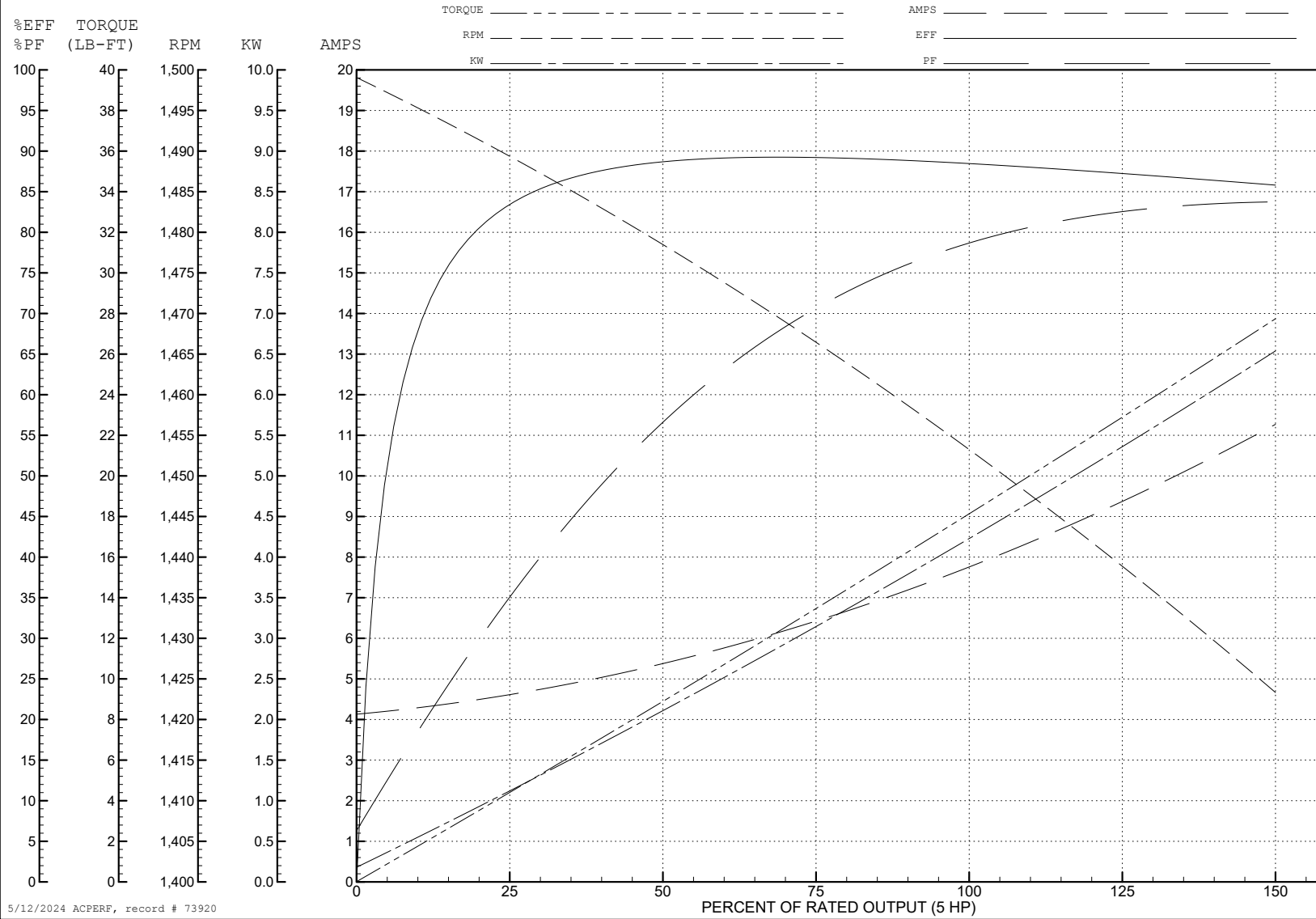
ABB Motors and Mechanical Inc.

WINDING # 36WGR998

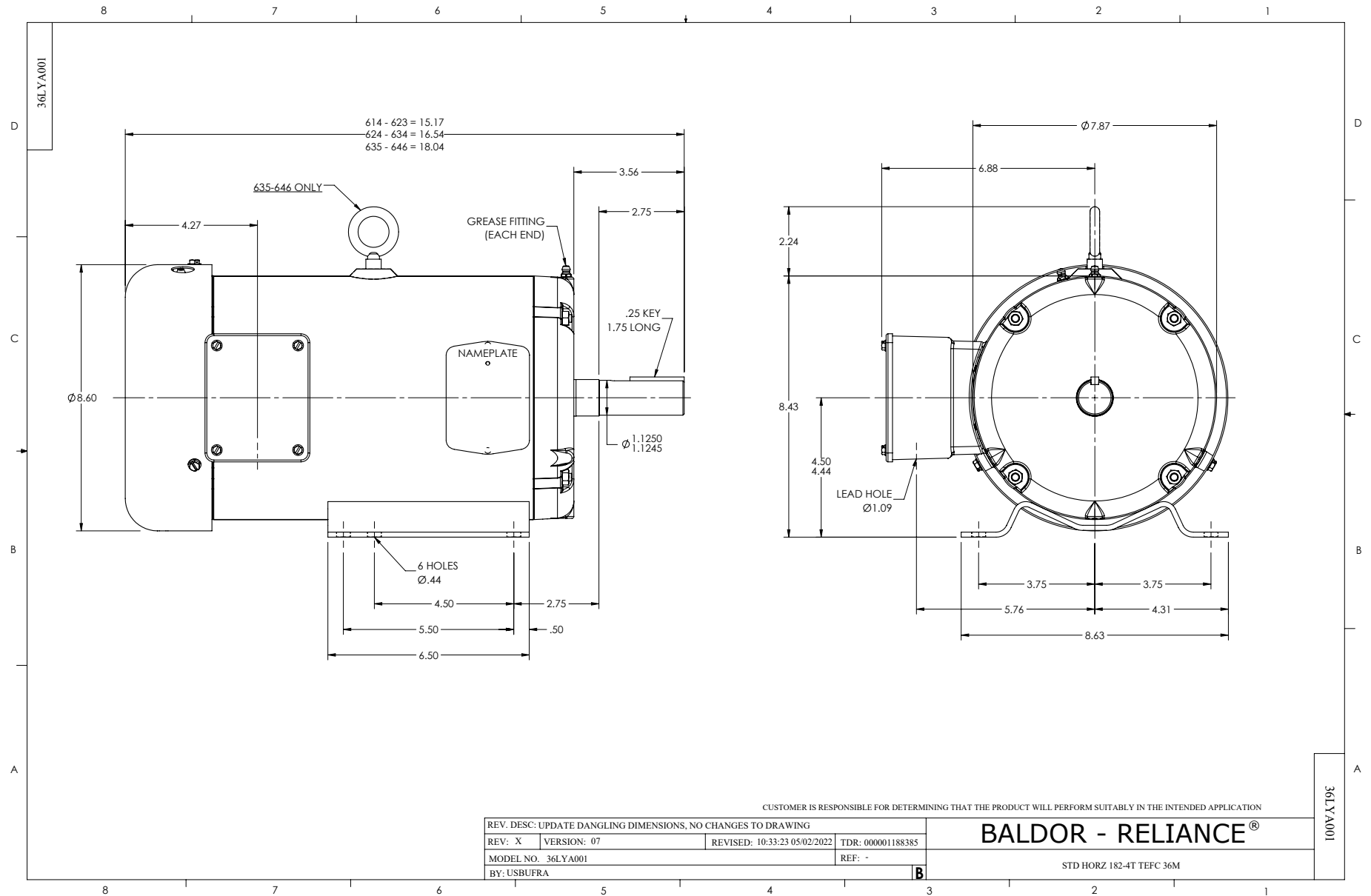
5 HP 3 PH 50 HZ 1450 RPM 400 V 3646M

Typical performance - not guaranteed values.

TORQUES (LB-FT): PO=76.3 PU=40.8 LR=49.6 LRA=61.5



5/12/2024 ACPERF, record # 73920



CUSTOMER IS RESPONSIBLE FOR DETERMINING THAT THE PRODUCT WILL PERFORM SUITABLY IN THE INTENDED APPLICATION

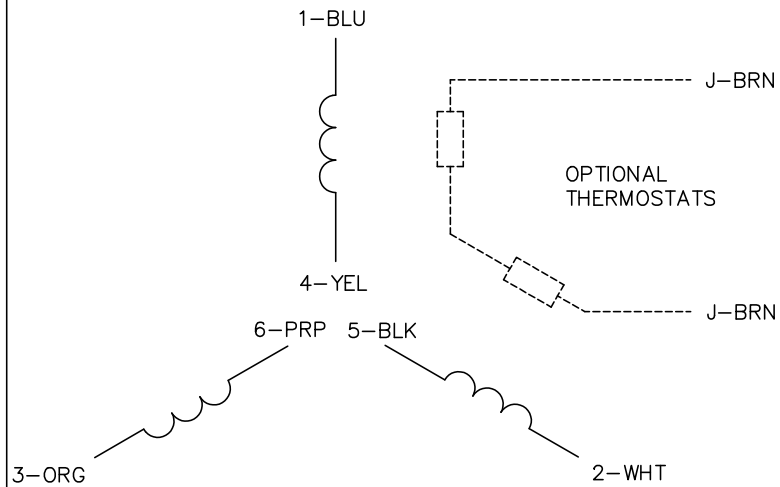
REV. DESC: UPDATE DANGLING DIMENSIONS, NO CHANGES TO DRAWING			
REV: X	VERSION: 07	REVISED: 10:33:23 05/02/2022	TDR: 000001188385
MODEL NO. 36LYA001		REF: -	
BY: USBUFRA		B	

BALDOR - RELIANCE®

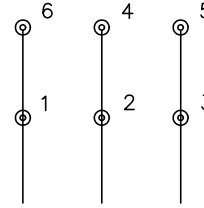
STD HORZ 182-4T TEFC 36M

36LYA001

CD0022

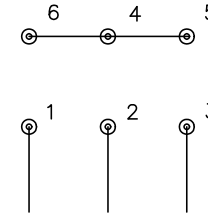


LOW VOLTAGE
(1D)



LINE

HIGH VOLTAGE
(1Y)



LINE

NOTES:

1. INTERCHANGE ANY TWO LINE LEADS TO REVERSE ROTATION.
2. OPTIONAL THERMOSTATS ARE PROVIDED WHEN SPECIFIED.
3. ACTUAL NUMBER OF INTERNAL PARALLEL CIRCUITS MAY BE A MULTIPLE OF THOSE SHOWN ABOVE.
4. LEAD COLORS ARE OPTIONAL. LEADS MUST ALWAYS BE NUMBERED AS SHOWN.

REV. DESC: REVISE TO SHOW OPTIONAL COLORS			
REV. LTR: F	BY: JLP	REVISED: 01/21/99 3:54	TDR: 0171435
CD0022		FILE: AAA00005144	MDL: -
		MTL: -	

BALDOR ELECTRIC Co.

3PH, DV, 6 LEADS, DELTA/WYE CONNECTION

CD0022